



CHAMBRE DES SALARIÉS  
LUXEMBOURG

EN

**YOU'LL  
NEVER  
WORK  
ALONE.**

LEARN MORE  
ABOUT THE CSL

# THE CHAMBER OF EMPLOYEES

## and its characteristics

### THE CSL IS ONE OF THE 5 PROFESSIONAL CHAMBERS IN LUXEMBOURG

Professional representation in Luxembourg is characterised by the coexistence of voluntary representation (trade unions and employers' organisations) and compulsory representation (the professional chambers) divided into employee and employer chambers.



### WE'RE (ALMOST) ALL PART OF THE CSL

With the exception of civil servants and public employees, all employees, apprentices, pensioners and jobseekers, **regardless of their nationality or place of residence**, automatically fall within the purview of the CSL.

#### The CSL defends the interests of :

445,600 employees  
+ 153,000 pensioners  
+ 4,000 apprentices  
+ 15,000 jobseekers

 **+600,000  
ADHERENTS**

### ITS PRIMARY MISSION

The CSL's primary mission is to represent and safeguard the interests of its adherents.

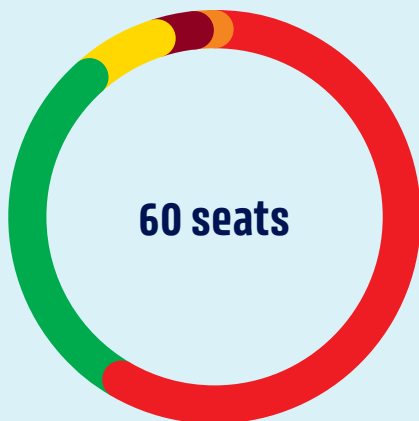
The CSL is their voice in the legislative process and in the country's socio-economic institutions.

## THE MAIN BODY OF THE CSL IS ITS PLENARY ASSEMBLY

The Plenary Assembly is elected every five years as part of the social elections. Its members are elected by universal suffrage and proportional representation, on the basis of lists presented by the trade unions.

The next elections are scheduled for March 2024, when more than 600,000 adherents will be called upon to vote for the new members of the Plenary Assembly.

Like the country's Chamber of Deputies, the CSL has 60 members.



**OGBL** 35 seats    **LCGB** 18 seats

**ALEBA** 4 seats    **FNCTTFEL** 2 seats

**SYPROLUX** 1 seat



To ensure that the various socio-professional categories are represented, **the 60 members of the Plenary Assembly are divided into nine categories.**

1	Steel industry	5 seats
2	Other industries	8 seats
3	Construction	6 seats
4	Financial services and Intermediation	8 seats
5	Other services	14 seats
6	Public administration and public companies	4 seats
7	Health and social work	6 seats
8	Active and retired CFL staff	3 seats
9	Pensioners	6 seats
Total		60 seats

# THE CHAMBER OF EMPLOYEES

is an institution enshrined in the Constitution

## DEFENDS YOUR INTERESTS

Is an official consultative body at the heart of the legislative procedure. The Government must solicit the opinion of the CSL for all laws and Grand-Ducal regulations concerning its constituents.

Each year, the CSL issues some 100 opinions on issues pertaining to economics, social questions, social security, labour law, education and vocational training.

It safeguards the quality of life, purchasing power, rights and social benefits of more than 600,000 employees, apprentices, pensioners and jobseekers.



## THE CSL TACKLES SOCIAL AND ECONOMIC ISSUES

It produces socio-economic reports on national and European issues, formulating the employees' point of view in macro-social studies and documenting employees' positions to inform the legislative and executive powers.

## THE CSL REPRESENTS EMPLOYEES, APPRENTICES, PENSIONERS AND JOBSEEKERS

**before national institutions in Luxembourg**

It appoints representatives to the National Health Fund (CNS), the National Pension Insurance Fund (CNAP) and the labour and social security courts, as well as employees' representatives to sit as assessors on the country's labour courts.

It sits on various consultative committees to defend the interests of its adherents.

## INFORMS WORKERS OF THEIR RIGHTS

The CSL offers publications on employment and social security law, taxation and, more generally, on the world of work.

## ADVOCATES FOR HEALTH, SAFETY AND WELL-BEING

The CSL devotes part of its activities to promoting and developing an ethos of prevention and health, as well as safety and well-being at work.

It also offers a «Stressberodung» service to help people suffering from stress at work.

## OFFERS TRAINING PROGRAMS

The CSL offers continuing education and trade union training courses through its two training centres, the Luxembourg Lifelong Learning Centre (LLLC) and the Centre de Formation et de Séminaires (CEFOS).



Discover the CSL?



For more information, visit  
[www.csl.lu](http://www.csl.lu)



# THE CHAMBER OF EMPLOYEES

A source of documentation and information available to all

## OFFERS PUBLICATIONS ON A VARIETY OF TOPICS

The publications are available in several languages and deal with issues such as:

- your rights as an employee, apprentice or pensioner;
- socio-economic development at national and European level and on subjects of general interest;
- health, safety and well-being at work.



All publications and newsletters can be downloaded free of charge at:



[www.csl.lu](http://www.csl.lu)

Category: [Library](#) > [Publications](#)



## SUBSCRIBE TO OUR NEWSLETTERS

- **BETTERWORK** draws your attention to topical issues relating to safety, health and well-being at work.
- **CSLNEWS** keeps you informed about CSL activities as well as political and economic developments in the country.
- **DROIT SOCIAL EN PRATIQUE** provides practical information on employment and social security law.
- **ECONEWS** provides you with economic data and statistics that allow you to critically assess preconceived ideas conveyed through public opinion.
- **GOFORMATION** keeps you informed on subjects relating to education, continuing training and human resources policy.
- **INFOSJURIDIQUES** gives you information on the interpretation of decisions taken by the courts in employment law matters.
- **SOCIONEWS** explains the changes to social legislation in Luxembourg.



## SUBSCRIBE TO IMPROOF

**Improof is a platform for reflection on how to achieve a fair and sustainable economy.**

Improof presents the contributions of authors who seek to address the following topics:

- high-quality and meaningful work;
- ecological and social sustainability;
- ecologically and socially sustainable consumption;
- socio-economic development;
- distributive justice and social cohesion;
- combating all types of exclusion and inequality;
- initial and ongoing training / lifelong learning, encompassing all aspects of life.

**Download the latest editions on:**



[www.improof.lu](http://www.improof.lu)

Category: Articles



## PARTICIPATE IN OUR EVENTS

**To stimulate public debate, the CSL organises a variety of events:**

- conferences and symposia dealing with various economic, political, social and educational aspects and well-being at work;
- themed workshops open to everyone on a variety of socio-economic and legal topics;
- information sessions on the LLLC's course offerings;
- information sessions on leave and support for continuing training.

## Discover the CSL?

18 rue Auguste Lumière  
L-1950 Luxembourg

T +352 27 494 200

[www.csl.lu](http://www.csl.lu) | [csl@csl.lu](mailto:csl@csl.lu)



# THE CSL OFFERS CONTINUING EDUCATION COURSES

for adults through its two training centres



## LUXEMBOURG LIFELONG LEARNING CENTRE

LA FORMATION CONTINUE DE LA CHAMBRE DES SALARIÉS

**For over 50 years, the CSL has been committed to helping employees progress. The CSL's training courses are a powerful tool for social advancement and are open to everyone.**

With over 12,000 enrolments per year, the LLLC is one of the largest providers of continuing education for adults in Luxembourg.

### OUR TRAINING COURSES – YOUR ADVANTAGE





The LLLC offers various types of training, decentralised to different locations, in different languages and with different formats.



### TRAINING COURSES

-  Evening classes
-  Inter- and intra-company seminars
-  University courses
-  Specialized training
-  Training for seniors
-  Certifications

### THE VARIOUS COURSE OPTIONS

-  Classroom training
-  Blended learning
-  Virtual classroom
-  E-learning

Discover all our training courses: [LLL.CU](https://www.lllc.lu)

**Luxembourg Lifelong Learning Centre**  
2-4 rue Pierre Hentges | L-1726 Luxembourg  
T +352 27 494 600 | [Formation@LLL.CU](mailto:Formation@LLL.CU)







## AREAS OF TRAINING

- Office Automation | IT | Digital Transformation
- Finance | Accounting | Taxation
- Law
- Communications | Marketing | Sales
- Human Resources
- Management | Leadership
- Personal / Professional development
- Economics | Management
- Banks | Insurance
- Logistics | Purchasing
- Quality | Environment
- Safety | Well-being | Health at work
- Governance | Audit | Risk Management
- Administration | Secretariat | Reception
- Social



## CENTRE DE FORMATION ET DE SÉMINAIRES

DE LA CHAMBRE DES SALARIÉS

**The Remich Training and Seminar Centre is a multifunctional facility that is ideal for holding seminars.**

It offers a wide range of services to national, inter-regional and international audiences. The facilities can be used by associations as well as public and private bodies wishing to organize training courses.



More information on [CEFOS.LU](https://www.cefos.lu)

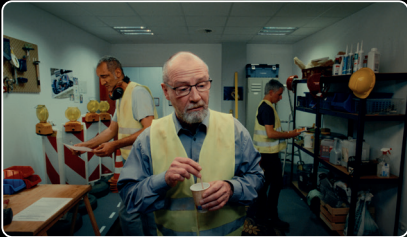
**Centre de Formation et de Séminaires**

12 rue du Château | L-5516 Remich  
T +352 27 494 500 | [cefos@cefos.lu](mailto:cefos@cefos.lu)



# THE 2024 SOCIAL ELECTIONS

Discover our exciting new series in which employees ask questions about **the CSL and the social elections!** You'll run into some zany situations and hilarious questions.





Scan the QR code or visit  
[www.csl.lu](http://www.csl.lu)





CHAMBRE DES SALARIÉS  
LUXEMBOURG

**I VOTE  
FOR  
MY  
RIGHTS!**

**CSL SOCIAL ELECTIONS**  
MARCH 2024

**YOU'LL  
NEVER  
WORK  
ALONE.**